



*The
Winning Home*

Whisper Creek Cabin,
nestled in the North
Carolina mountains at
Whisper Mountain, is a
nature lover's retreat.



Choose
Your Home
Giveaway

Small Spaces, Big Style

Our first-ever home-giveaway program resulted in four beautiful homes and one very happy winner. **BY DERICK BELDEN**

This year, we partnered with *myhomeideas.com* for the Choose Your Home Giveaway, which gave our readers the opportunity to enter to win one of four

amazing homes. This program debuted in our December 2008 issue with renderings of the houses we were building in four different Southern locations. Throughout 2009, we told the story of each one—Whisper Mountain outside Asheville, North Carolina; Callaway Gardens in Pine Mountain, Georgia; Traditions Club in Bryan, Texas; and Habersham in Beaufort, South Carolina. As part of our ongoing coverage in the magazine, *myhomeideas.com* ran interactive features about each house and location. Then in March, readers began entering online to win one of the four houses.

The Winner

We know what you're thinking: Does anyone really ever win? At *Southern Living* they do. Penny Hawkes from LaPlace, Louisiana, was selected at random as our winner from over 5 million online entries. Winning meant that she could choose one of our four homes as her own—she picked the Whisper Creek Cabin outside Asheville, North Carolina.

Originally from North Carolina, Penny chose the Whisper Mountain house to have a place closer to family, especially when she retires. After winning, she was so excited, she called

Bill McDougald, our director of the Choose Your Home Giveaway program, twice. Once to make sure he wasn't a friend playing a joke, and a second time to confirm he was a real person and she had really won. By now, Penny and her family have begun to make their own memories in the Whisper Creek Cabin.

The Houses

The home at Whisper Mountain in North Carolina was built as a retreat for a person who loves the outdoors. Callaway Gardens has long been a reader favorite for beautiful gardens and active

family fun—the house there was designed as a gardener's retreat. Our house at Traditions Club was designed for those who love wide-open spaces, Big 12 football, and golf. And Habersham in the South Carolina Lowcountry offers a casual lifestyle that's so often reflected on our pages, which is why we chose to build a cottage there.

Want an inside look at the four homes we built and the places where they are located? Then turn the page.



Meet the Winner

PENNY HAWKES
LaPlace, Louisiana



Whisper Creek Cabin

Whisper Mountain outside Asheville, North Carolina



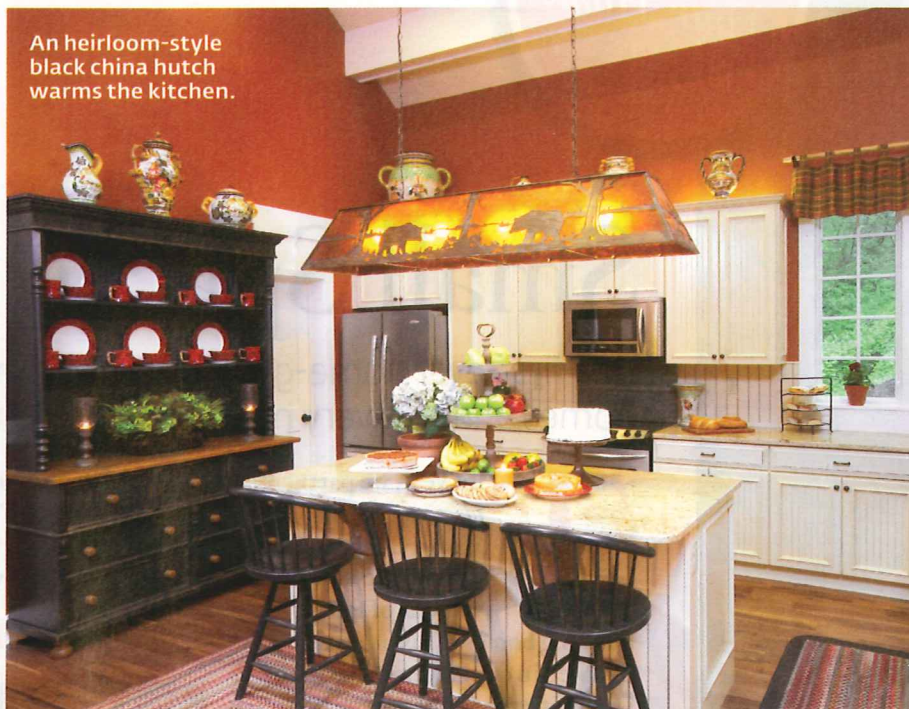
A rhododendron railing and recycled-metal roofing lend rustic character.

Whisper Creek Cabin suits its mountainside location. Crafted from a mixture of modern and recycled materials, it's not only a rustic cabin in the woods, but it's also state-of-the-art, built to the specifications of the NC HealthyBuilt Homes Program (healthybuilthomes.org). This designation certifies that the house is efficient, thus saving on the monthly expenses, and is also more comfortable. Recycled, local, and sustainable materials combine for a nearly maintenance-free home. The exterior features bark siding in the gables, indigenous stone, and recycled-metal roofing.

Deep porches detailed with locust columns cut on-site, rhododendron-branch rails, and plenty of seating encourage enjoyment of the dramatic views and the fantastic mountain climate. These porches also nearly double the square footage of the cottage. Inside, ample rooms, an open kitchen, and two bedrooms take up just over 1,500 square feet.

Editor's Tip

Select materials that will tie a house to its location. Here, bark shingles and rhododendron railings are from nearby artisans. Woodland accents such as an old timber mantel and tartan fabrics tell a mountain story inside.



An heirloom-style black china hutch warms the kitchen.



Bookcases give the dining room a library feel.

Team

Developer: Whisper Mountain Limited, whispermountainnc.com

Builders: Haven Custom Homes, havenhomes.com, and Jade Mountain Builders, jademountainbuilders.com

Architecture: Allison Ramsey Architects, allisonramseyarchitect.com

Interiors: Pheasant Hill Design by Stephen Chambliss, pheasanthilldesign.com

Landscape: LaQuatra Bonci Associates, laquatrabonci.com

Sponsors

HomerWood by Armstrong, homerwood.com

James Hardie, jameshardie.com